

---

# **E-Crane<sup>®</sup> Capacity Charts**

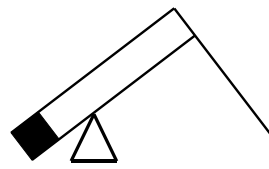
## **MH900 Series (Metric)**

---

**Model MH8248CR-D**  
**PD-E**

**Model MH8264CR-D**  
**PD-E**





**E-Crane<sup>®</sup> Capacity Charts**  
**Material Handlers MH900 Series**  
**Model MH8248**

**CONTENTS**

**MH8248CR-D MATERIAL HANDLER . . . . . 3**  
    **Rated Lift Capacity (Mton/m) . . . . . 3**

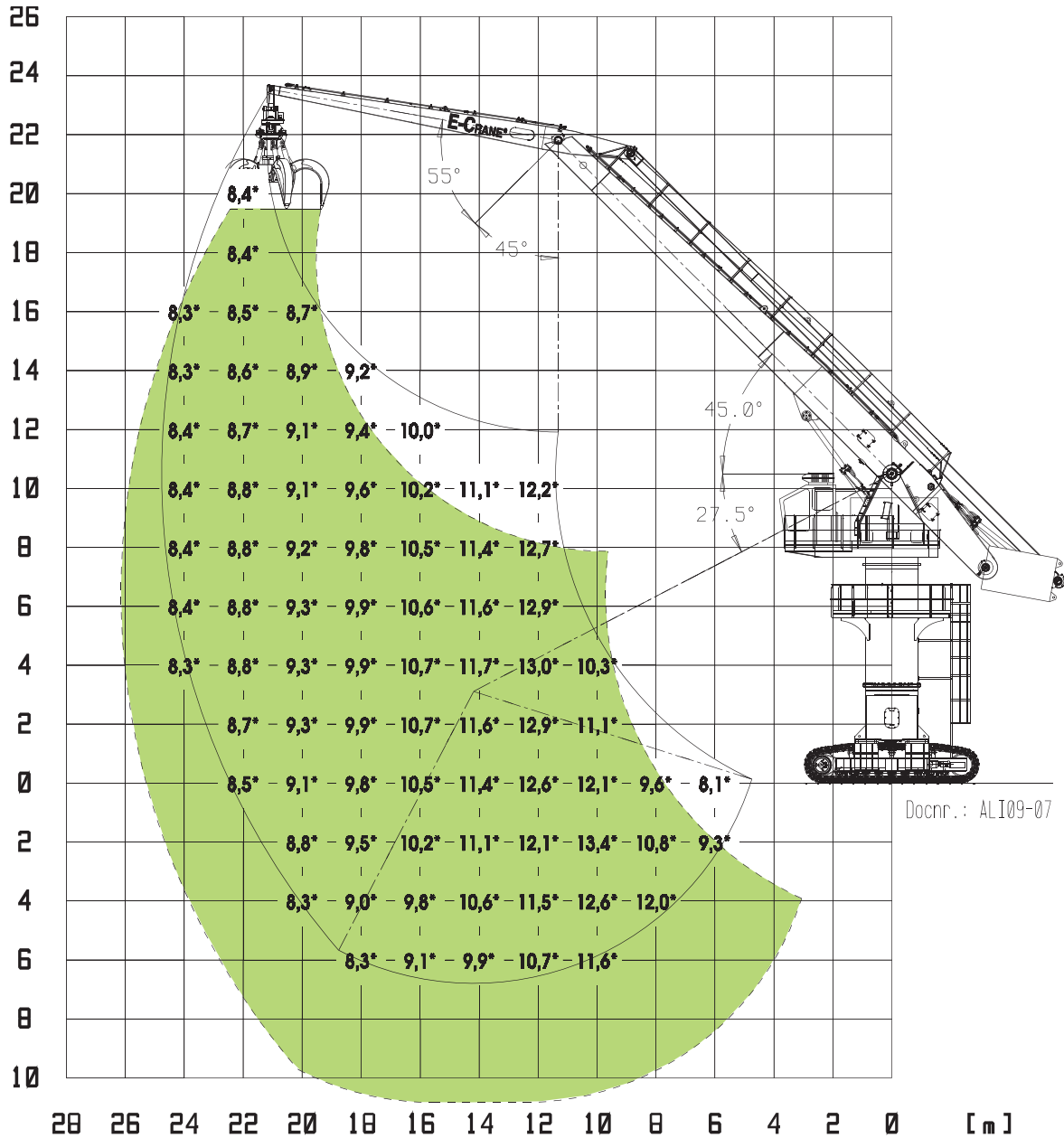
**MH8248PD-E MATERIAL HANDLER . . . . . 5**  
    **Rated Lift Capacity (Mton/m) . . . . . 5**

**MODEL MH8248 TECHNICAL SPECS . . . . . 7**



**MH8248CR-D MATERIAL HANDLER**

**Rated Lift Capacity (Mton/m)**



Lift Capacities are stated in metric tonnes (t) on the lifting gear's stick tip, and can be lifted 360° on firm, level supporting surface. The user shall make allowances for job conditions such as soft or uneven ground.

Lift Capacities shown do not exceed 75% of minimum tipping loads or 87% of hydraulic capacities (indicated via \*). Lift Capacities apply only to the machine as originally manufactured and normally equipped by the manufacturer. Lift Capacities are in compliance with ISO 10567:2007

The mass of slings and any auxiliary lifting devices shall be deducted from the rated load to determine the net load that may be lifted.

The operator should be fully acquainted with the operator's manual and the operating safety manual furnished by the manufacturer before operating the machine.

The total mass of the machine is 112300 kg. Included in this mass are 750mm double grouser shoes, 16m boom, 9.9m stick, 2.5m 34650 kg counterweight, all operating fluids and a 75 kg operator.

MH900 Series Model 8248CR-D Material Handler, acc. ISO 10567:2007														
R [m]	H [m]	6	8	10	12	14	16	18	20	22	24	Load @max radius		
													L [kg]	R [m]
22													8394*	21,9
20										8389*			8343*	22,9
18										8436*			8311*	23,6
16									8762*	8511*	8308*		8294*	24,2
14								9277*	8902*	8600*	8348*		8287*	24,5
12						10801*	10044*	9481*	9043*	8690*	8391*		8287*	24,7
10					12369*	11160*	10304*	9666*	9171*	8770*	8423*		8291*	24,8
8					12730*	11439*	10512*	9816*	9272*	8826*	8429*		8297*	24,6
6					12924*	11612*	10647*	9912*	9329*	8842*	8389*		8302*	24,4
4				10452*	12949*	11665*	10695*	9939*	9327*	8800*			8300*	23,9
2			8705*	11329*	12809*	11589*	10640*	9880*	9246*	8672*			8286*	23,3
0		8404*	9885*	12420*	12504*	11374*	10465*	9713*	9057*	8410*			8250*	22,4
-2		9592*	11092*	13269*	12025*	11001*	10146*	9404*	8710*				8179*	21,4
-4			12358*	12391*	11343*	10438*	9640*	8896*	8088*				8049*	20,1
-6					10406*	9624*	8867*	8047*					8018*	18,1

**NOTE:**

Lift Capacities are stated in metric tonnes (t) on the lifting gear's stick tip, and can be lifted 360° on firm, level supporting surface. The user shall make allowances for job conditions such as soft or uneven ground.

Lift Capacities shown do not exceed 75% of minimum tipping loads or 87% of hydraulic capacities (320 bar / 4640 psi) (indicated via \*).

Lift Capacities apply only to the machine as originally manufactured and normally equipped by the manufacturer.

Lift Capacities are in compliance with ISO 10567:2007

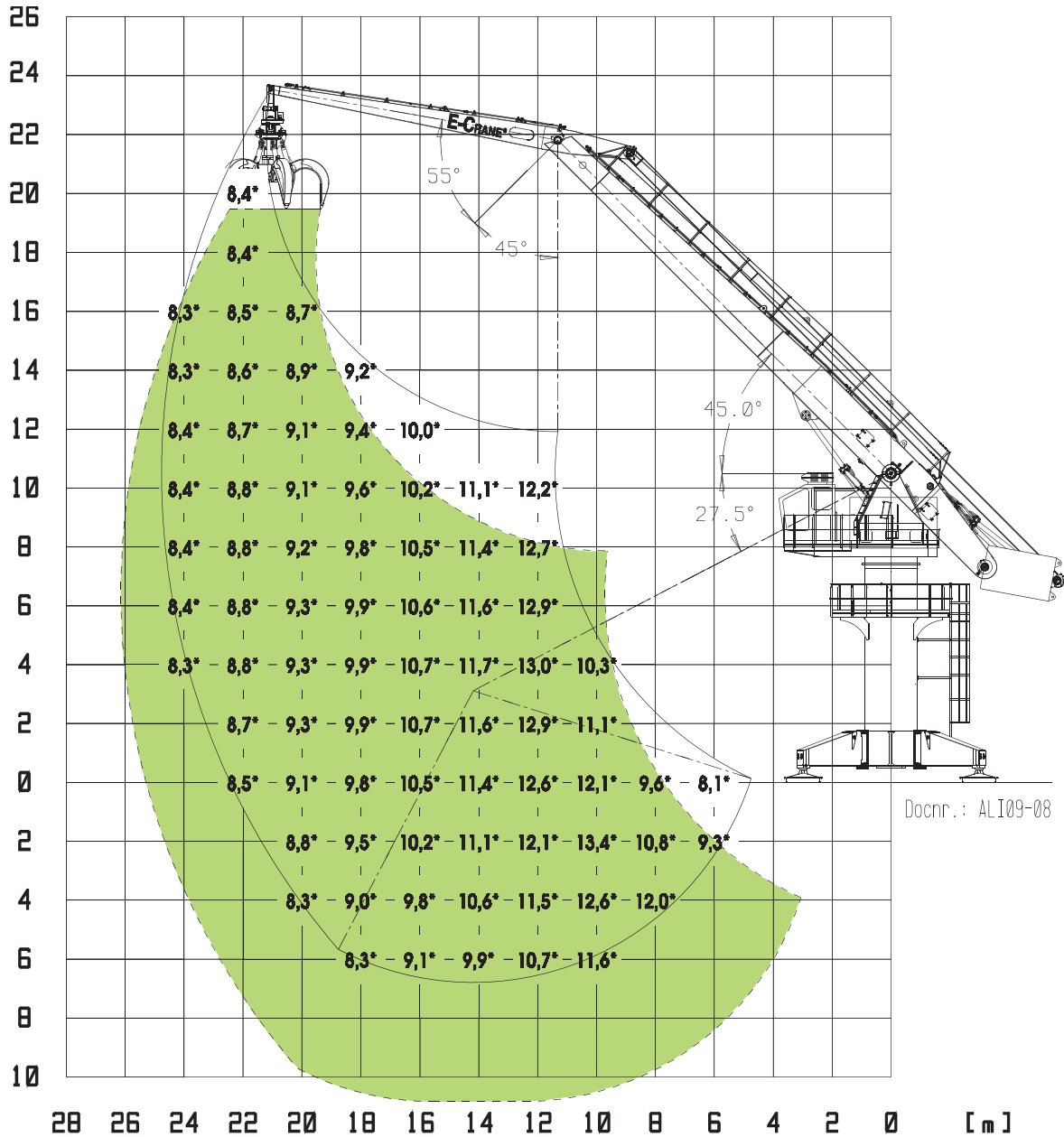
The mass of slings and any auxiliary lifting devices shall be deducted from the rated load to determine the net load that may be lifted.

The operator should be fully acquainted with the operator's manual and the operating safety manual furnished by the manufacturer before operating the machine.

The total mass of the machine is 112300 kg. Included in this mass are 750mm double grouser shoes, 16m boom, 9,9m stick, 2,5m 34650 kg counterweight, all operating fluids and a 75 kg operator.

MH8248PD-E MATERIAL HANDLER

Rated Lift Capacity (Mton/m)



Lift Capacities are stated in metric tonnes (t) on the lifting gear's stick tip, and can be lifted 360° on firm, level supporting surface. The user shall make allowances for job conditions such as soft or uneven ground. Lift Capacities shown do not exceed 75% of minimum tipping loads or 87% of hydraulic capacities (indicated via \*). Lift Capacities apply only to the machine as originally manufactured and normally equipped by the manufacturer. Lift Capacities are in compliance with ISO 10567:2007

The mass of slings and any auxiliary lifting devices shall be deducted from the rated load to determine the net load that may be lifted.

The operator should be fully acquainted with the operator's manual and the operating safety manual furnished by the manufacturer before operating the machine.

The total mass of the machine is 89300 kg. Included in this mass are upper revolving frame, pedestal, column, 16m boom, 9,9m stick, 2,5m 34650 kg counterweight, all operating fluids and a 75 kg operator.

MH900 Series Model 8248PD-E Material Handler, acc. ISO 10567:2007														
R [m]	H [m]	6	8	10	12	14	16	18	20	22	24	Load @max radius		
													L [kg]	R [m]
22													8394*	21,9
20										8389*			8343*	22,9
18										8436*			8311*	23,6
16									8762*	8511*	8308*		8294*	24,2
14								9277*	8902*	8600*	8348*		8287*	24,5
12						10801*	10044*	9481*	9043*	8690*	8391*		8287*	24,7
10					12369*	11160*	10304*	9666*	9171*	8770*	8423*		8291*	24,8
8					12730*	11439*	10512*	9816*	9272*	8826*	8429*		8297*	24,6
6					12924*	11612*	10647*	9912*	9329*	8842*	8389*		8302*	24,4
4				10452*	12949*	11665*	10695*	9939*	9327*	8800*			8300*	23,9
2			8705*	11329*	12809*	11589*	10640*	9880*	9246*	8672*			8286*	23,3
0	8404*	9885*	12420*	12504*	12504*	11374*	10465*	9713*	9057*	8410*			8250*	22,4
-2	9592*	11092*	13269*	12025*	11001*	10146*	9404*	8710*					8179*	21,4
-4		12358*	12391*	11343*	10438*	9640*	8867*	8047*	8088*				8049*	20,1
-6				10406*		9624*							8018*	18,1

**NOTE:**

Lift Capacities are stated in metric tonnes (t) on the lifting gear's stick tip, and can be lifted 360° on firm, level supporting surface. The user shall make allowances for job conditions such as soft or uneven ground.

Lift Capacities shown do not exceed 75% of minimum tipping loads or 87% of hydraulic capacities (320 bar / 4640 psi) (indicated via \*).

Lift Capacities apply only to the machine as originally manufactured and normally equipped by the manufacturer.

Lift Capacities are in compliance with ISO 10567:2007

The mass of slings and any auxiliary lifting devices shall be deducted from the rated load to determine the net load that may be lifted.

The operator should be fully acquainted with the operator's manual and the operating safety manual furnished by the manufacturer before operating the machine.

The total mass of the machine is 89300 kg. Included in this mass are upper revolving frame, pedestal, column, 16m boom, 9,9m stick, 2,5m 34650 kg counterweight, all operating fluids and a 75 kg operator.

## MODEL MH8248 TECHNICAL SPECS

	<b>Specifications English (*)</b>		<b>Specifications Metric (*)</b>	
<b>Operating Range:</b> (related to ground reference plane (GRP) +0 and centerline of rotation)				
Minimum Outreach Range (from centerline of rotation)	15'-7"		4,750 m	
Maximum Outreach (from centerline of rotation)	81'-3.3/16"		24,769 m	
Downreach Range (below GRP)	22'-3.3/16"		6,787 m	
Lifting Range (vertical lift)	77'-2.1/2"		23,533 m	
Boom Operating Angles (above and below horizontal)	+45°/-27.5°		+45°/-27.5°	
Stick Operating Angles (before and after vertical)	+55°/-45°		+55°/-45°	
Degrees of Rotation	360° continuous		360° continuous	
<b>Main Hydr. &amp; Elec. Specs:</b>	<b>CR-D</b>	<b>PD-E</b>	<b>CR-D</b>	<b>PD-E</b>
Power Supply	-	3-Phase 480 Volts AC, 60 Hz	-	3-Phase 400 Volts AC, 50 Hz
Generator	200 kVA	-	200 kVA	-
Electrical Motor	150 hp	150 hp	110 kW	110 kW
Implement Pumps				
Max. Flow	101.7 gpm	101.7 gpm	385 l/min	385 l/min
Max. Working Circuit Pressure	4640 psi	4640 psi	320 bar	320 bar
Swing Pump				
Max. Flow	29.5 gpm	29.5 gpm	112 l/min	112 l/min
Max. Working Circuit Pressure	4061 psi	4061 psi	280 bar	280 bar
Hydraulic System Relief Setting	4650 psi	4650 psi	32.000 kPa	32.000 kPa
Hydraulic Tank Refill Capacity	300 USgal	300 USgal	1.135 l	1.135 l
<b>Dimensions:</b>				
Boom Length	52'-5.15/16"		16 m	
Stick Length	32'-5.3/4"		9,9 m	
<b>Total Weight Superstructure**</b>	159.500 lbs		72.500 kg	
<b>Total Weight Model MH8248 as standard equipped</b>	<b>CR-D</b>	<b>PD-E</b>	<b>CR-D</b>	<b>PD-E</b>
	247.060 lbs	196.460 lbs	112.300 kg	89.300 kg

(\*) Materials and specifications are subject to change without notice.

See your E-Crane® dealer for available options.

(\*\*) Operating weight does include lubricants, hydraulic oil and operator

©2009 E-Crane Worldwide / Indusign. All rights reserved. All technical specifications are subject to change without prior notice and without incurring responsibility for material handlers previously sold! Changes, errors and misprints reserved.