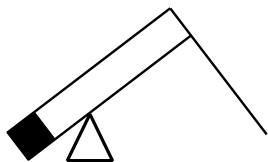


E-Crane[®] Capacity Charts

MH1200 Series (Imperial)

Model MH11290CR-D
PD-E

Model MH10317CR-D
PD-E



E-Crane[®] Capacity Charts
Material Handlers MH1200 Series
Model MH11290

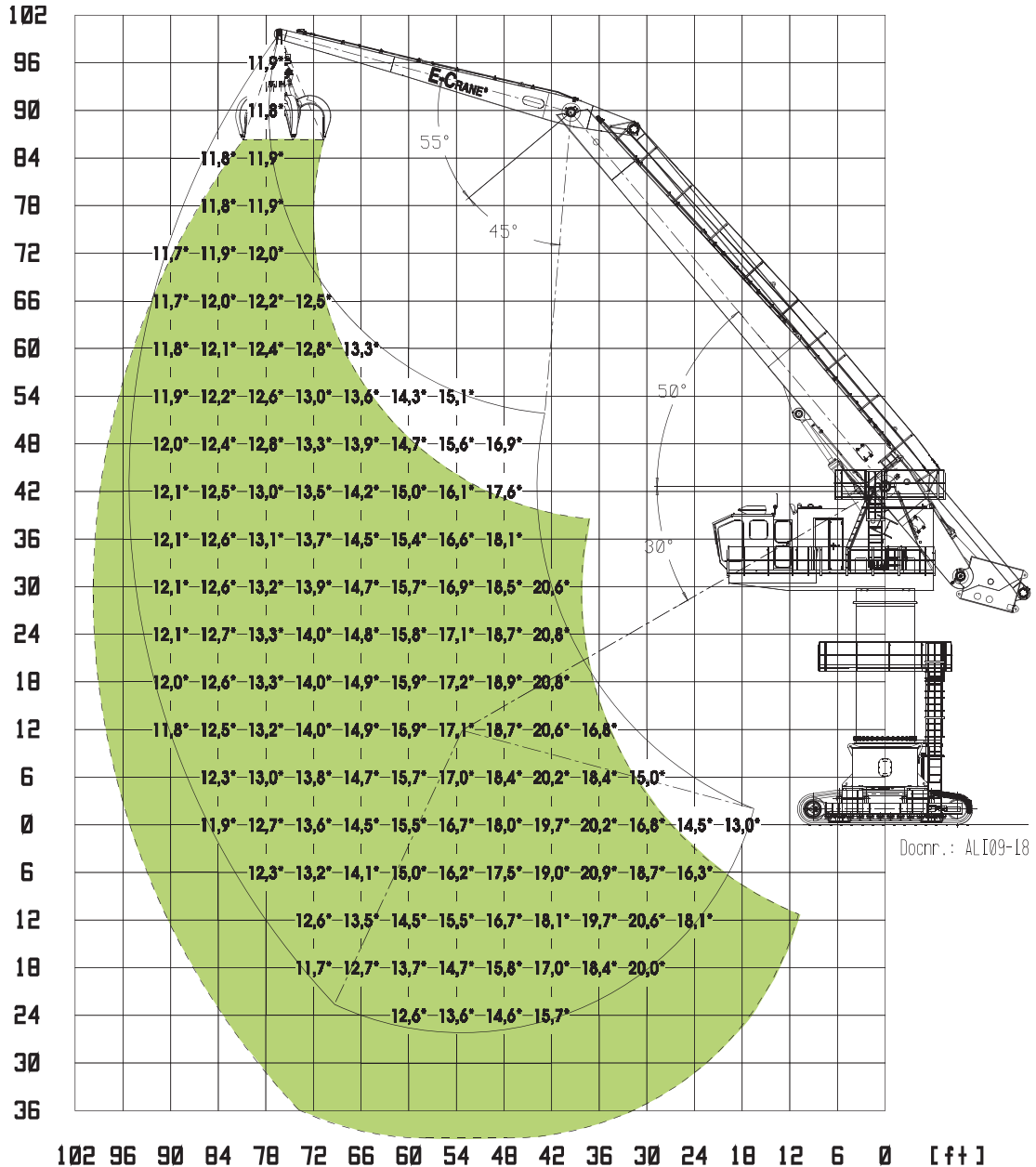
CONTENTS

MH11290CR-D MATERIAL HANDLER	3
Rated Lift Capacity (USton/ft)	3
MH11290PD-E MATERIAL HANDLER	5
Rated Lift Capacity (USton/ft)	5
MODEL MH11290 TECHNICAL SPECS	7



MH11290CR-D MATERIAL HANDLER

Rated Lift Capacity (USton/ft)



Lift Capacities are stated in US tonnes (USton) on the lifting gear's stick tip, and can be lifted 360° on firm, level supporting surface. The user shall make allowances for job conditions such as soft or uneven ground.

Lift Capacities shown do not exceed 75% of minimum tipping loads or 87% of hydraulic capacities (indicated via *).
 Lift Capacities apply only to the machine as originally manufactured and normally equipped by the manufacturer.
 Lift Capacities are in compliance with SAE J2518: APR2008

The mass of slings and any auxiliary lifting devices shall be deducted from the rated load to determine the net load that may be lifted.

The operator should be fully acquainted with the operator's manual and the operating safety manual furnished by the manufacturer before operating the machine.

The total mass of the machine is 366300 lbs. Included in this mass are 2.46ft double grouser shoes, 61.5ft boom, 38ft stick, 8.2ft 109758 lbs counterweight, all operating fluids and a 165 lbs operator.

MH1200 Series Model11290CR-D Material Handler, acc. SAE J2518: APR2008															
R [ft]	18	24	30	36	42	48	54	60	66	72	78	84	90	Load @max radius	
	H [ft]													L [lbf]	R [ft]
96											23750*			23750*	78,9
90											23650*			23600*	82,6
84											23700*	23500*		23450*	85,8
78											23850*	23550*		23400*	88,4
72											24100*	23700*	23400*	23350*	90,6
66										25050*	24450*	23900*	23450*	23350*	92,3
60									26500*	25550*	24800*	24150*	23600*	23300*	93,6
54							30150*	28500*	27150*	26050*	25200*	24450*	23800*	23350*	94,5
48						33800*	31250*	29350*	27800*	26600*	25550*	24700*	23950*	23350*	95,1
42						35150*	32300*	30100*	28400*	27050*	25900*	24950*	24100*	23350*	95,2
36						36200*	33150*	30800*	28950*	27450*	26200*	25150*	24200*	23400*	95,0
30						37000*	33800*	31300*	29350*	27750*	26400*	25250*	24200*	23450*	94,4
24						37400*	34200*	31650*	29650*	27950*	26550*	25300*	24150*	23450*	93,4
18						37550*	34350*	31800*	29750*	28000*	26550*	25200*	23950*	23500*	92,0
12						37350*	34250*	31750*	29700*	27900*	26400*	25000*	23550*	23500*	90,2
6						36850*	33900*	31450*	29400*	27650*	26050*	24500*		23450*	87,9
0	25900*	28950*	33500*	40450*	39400*	36050*	33300*	30950*	28900*	27100*	25450*	23750*		23400*	85,1
-6		32600*	37250*	41600*	38000*	34950*	32350*	30100*	28100*	26300*	24550*			23300*	81,9
-12		36150*	41100*	39450*	36200*	33450*	31050*	28950*	27000*	25100*				23100*	78,0
-18			40050*	36800*	34000*	31550*	29350*	27350*	25400*	23300*				22750*	73,4
-24					31300*	29150*	27150*	25150*						23050*	65,9

NOTE:

Lift Capacities are stated in pounds (lbf) on the lifting gear's stick tip, and can be lifted 360° on firm, level supporting surface. The user shall make allowances for job conditions such as soft or uneven ground.

Lift Capacities shown do not exceed 75% of minimum tipping loads or 87% of hydraulic capacities (indicated via *).

Lift Capacities apply only to the machine as originally manufactured and normally equipped by the manufacturer.

Lift Capacities are in compliance with SAE J2518 : APR2008

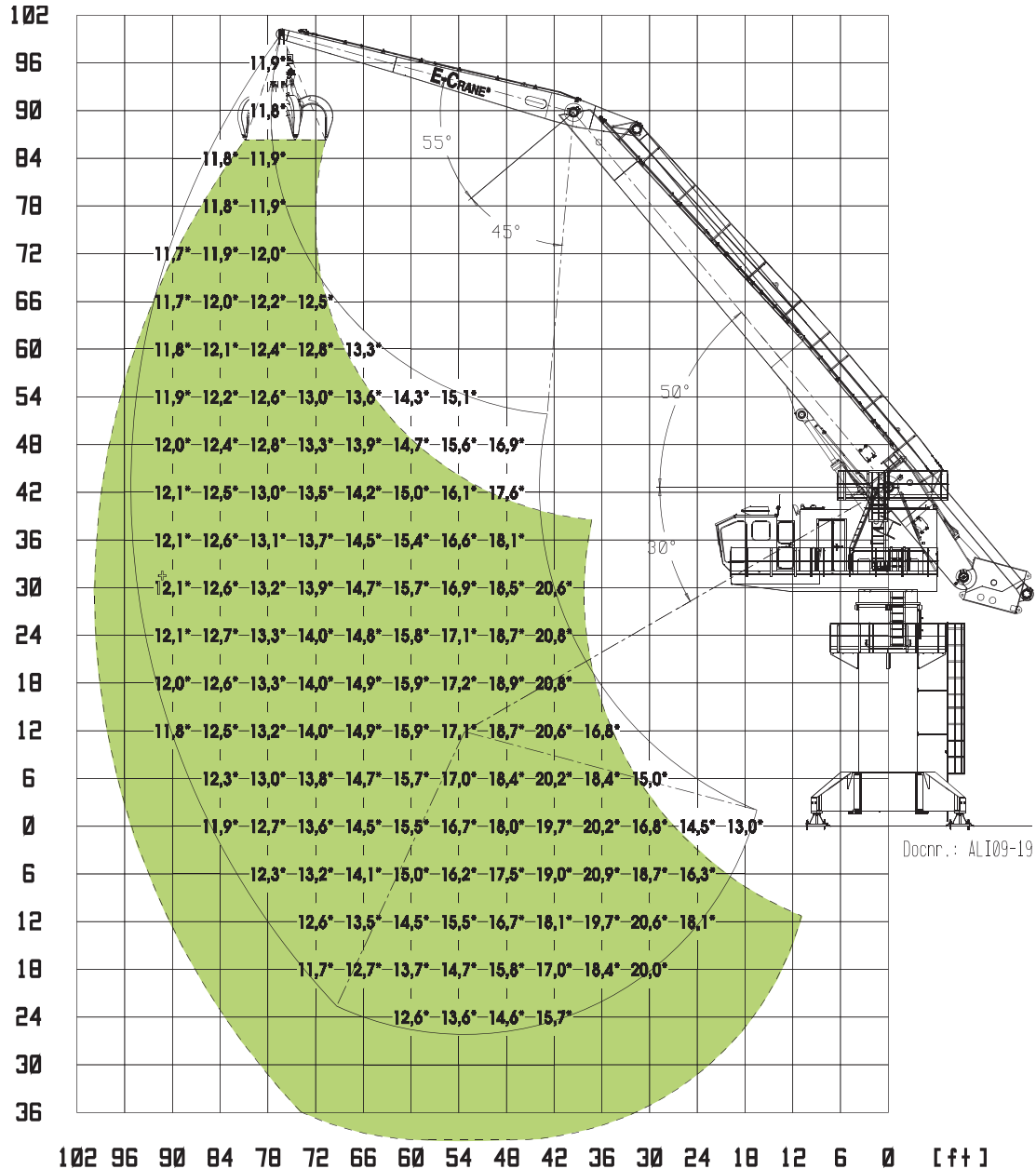
The mass of slings and any auxiliary lifting devices shall be deducted from the rated load to determine the net load that may be lifted.

The operator should be fully acquainted with the operator's manual and the operating safety manual furnished by the manufacturer before operating the machine.

The total mass of the machine is 366300 lbs. Included in this mass are 2.46ft double grouser shoes, 61.5ft boom, 38ft stick, 8.2ft 109758 lbs counterweight, all operating fluids and a 165 lbs operator.

MH11290PD-E MATERIAL HANDLER

Rated Lift Capacity (USton/ft)



Lift Capacities are stated in US tonnes (USton) on the lifting gear's stick tip, and can be lifted 360° on firm, level supporting surface. The user shall make allowances for job conditions such as soft or uneven ground.

Lift Capacities shown do not exceed 75% of minimum tipping loads or 87% of hydraulic capacities (indicated via *).
 Lift Capacities apply only to the machine as originally manufactured and normally equipped by the manufacturer.
 Lift Capacities are in compliance with SAE J2518: APR2008

The mass of slings and any auxiliary lifting devices shall be deducted from the rated load to determine the net load that may be lifted.

The operator should be fully acquainted with the operator's manual and the operating safety manual furnished by the manufacturer before operating the machine.

The total mass of the machine is 304700 lbs. Included in this mass are upper revolving frame, pedestal, column, 61.5ft boom, 38ft stick, 8.2ft 109758 lbs counterweight, all operating fluids and a 165 lbs operator.

MH1200 Series Model 11290PD-E Material Handler, acc. SAE J2518: APR2008

R [ft]	18	24	30	36	42	48	54	60	66	72	78	84	90	Load @max radius	
	H [ft]													L [lbf]	R [ft]
96											23750*			23750*	78,9
90											23650*			23600*	82,6
84											23700*	23500*		23450*	85,8
78											23850*	23550*		23400*	88,4
72											24100*	23700*	23400*	23350*	90,6
66										25050*	24450*	23900*	23450*	23350*	92,3
60								26500*		25550*	24800*	24150*	23600*	23300*	93,6
54							30150*	28500*		26050*	25200*	24450*	23800*	23350*	94,5
48						33800*	31250*	29350*		26600*	25550*	24700*	23950*	23350*	95,1
42						35150*	32300*	30100*		27050*	25900*	24950*	24100*	23350	95,2
36						36200*	33150*	30800*		27450*	26200*	25150*	24200*	23350	95,0
30					41200*	37000*	33800*	31300*		27750*	26400*	25250*	24200*	23450	94,4
24					41600*	37400*	34200*	31650*		27950*	26550*	25300*	24150*	23450*	93,4
18					41550*	37550*	34350*	31800*		28000*	26550*	25200*	23950*	23500*	92,0
12					33550*	37350*	34250*	31750*		27900*	26400*	25000*	23550*	23500*	90,2
6					29850*	36850*	33900*	31450*		27650*	26050*	24500*		23450*	87,9
0	25900*	28950*	33500*	40450*	39400*	36050*	33300*	30950*		28900*	25450*	23750*		23400*	85,1
-6		32600*	37250*	41600*	38000*	34950*	32350*	30100*		28100*	24550*			23300*	81,9
-12		36150*	41100*	39450*	36200*	33450*	31050*	28950*		27000*	25100*			23100*	78,0
-18			40050*	36800*	34000*	31550*	29350*	27350*		23300*				22750*	73,4
-24					31300*	29150*	27150*	25150*						23050*	65,9

NOTE:

Lift Capacities are stated in pounds (lbf) on the lifting gear's stick tip, and can be lifted 360° on firm, level supporting surface. The user shall make allowances for job conditions such as soft or uneven ground.

Lift Capacities shown do not exceed 75% of minimum tipping loads or 87% of hydraulic capacities (indicated via *).

Lift Capacities apply only to the machine as originally manufactured and normally equipped by the manufacturer.

Lift Capacities are in compliance with SAE J2518: APR2008

The mass of slings and any auxiliary lifting devices shall be deducted from the rated load to determine the net load that may be lifted.

The operator should be fully acquainted with the operator's manual and the operating safety manual furnished by the manufacturer before operating the machine.

The total mass of the machine is 304700 lbs. Included in this mass are upper revolving frame, pedestal, column, 61.5ft boom, 38ft stick, 8.2ft 109758 lbs counterweight, all operating fluids and a 165 lbs operator.

MODEL MH11290 TECHNICAL SPECS

	Specifications English (*)		Specifications Metric (*)	
Operating Range: (related to ground reference plane (GRP) +0 and centerline of rotation)				
Minimum Outreach Range (from centerline of rotation)	16'-6.3/16"		5,033 m	
Maximum Outreach (from centerline of rotation)	95'-2.11/16"		29,050 m	
Downreach Range (below GRP)	26'-2"		7,975 m	
Lifting Range (vertical lift)	99'-7.1/2"		30,366 m	
Boom Operating Angles (above and below horizontal)	+50°/-30°		+50°/-30°	
Stick Operating Angles (before and after vertical)	+55°/-45°		+55°/-45°	
Degrees of Rotation	360° continuous		360° continuous	
Main Hydr. & Elec. Specs:	CR-D	PD-E	CR-D	PD-E
Power Supply	-	3-Phase 480 Volts AC, 60 Hz	-	3-Phase 400 Volts AC, 50 Hz
Generator	300 kVA	-	300 kVA	-
Electrical Motor	200 hp	200 hp	160 kW	160 kW
Implement Pumps				
Max. Flow	211.3 gpm	211.3 gpm	800 l/min	800 l/min
Max. Working Circuit Pressure	4640 psi	4640 psi	320 bar	320 bar
Swing Pump				
Max. Flow	64.2 gpm	64.2 gpm	243 l/min	243 l/min
Max. Working Circuit Pressure	3844 psi	3844 psi	265 bar	265 bar
Hydraulic System Relief Setting	4650 psi	4650 psi	32.000 kPa	32.000 kPa
Hydraulic Tank Refill Capacity	489 USgal	489 USgal	1.850 l	1.850 l
Dimensions:				
Boom Length	61'-6.3/16"		18,75 m	
Stick Length	38'-11/16"		11,6 m	
Total Weight Superstructure**	245.410 lbs		111.550 kg	
Total Weight Model MH11290 as standard equipped	CR-D	PD-E	CR-D	PD-E
	366.300 lbs	304.700 lbs	166.500 kg	138.500 kg

(*) Materials and specifications are subject to change without notice.

See your E-Crane® dealer for available options.

(**) Operating weight does include lubricants, hydraulic oil and operator

©2009 E-Crane Worldwide / Indusign. All rights reserved. All technical specifications are subject to change without prior notice and without incurring responsibility for material handlers previously sold! Changes, errors and misprints reserved.